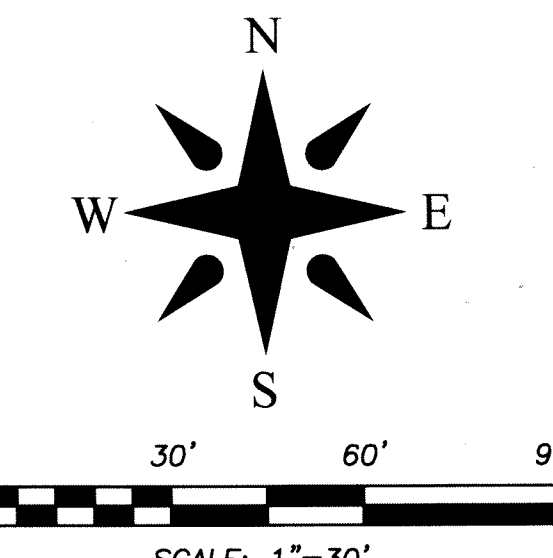


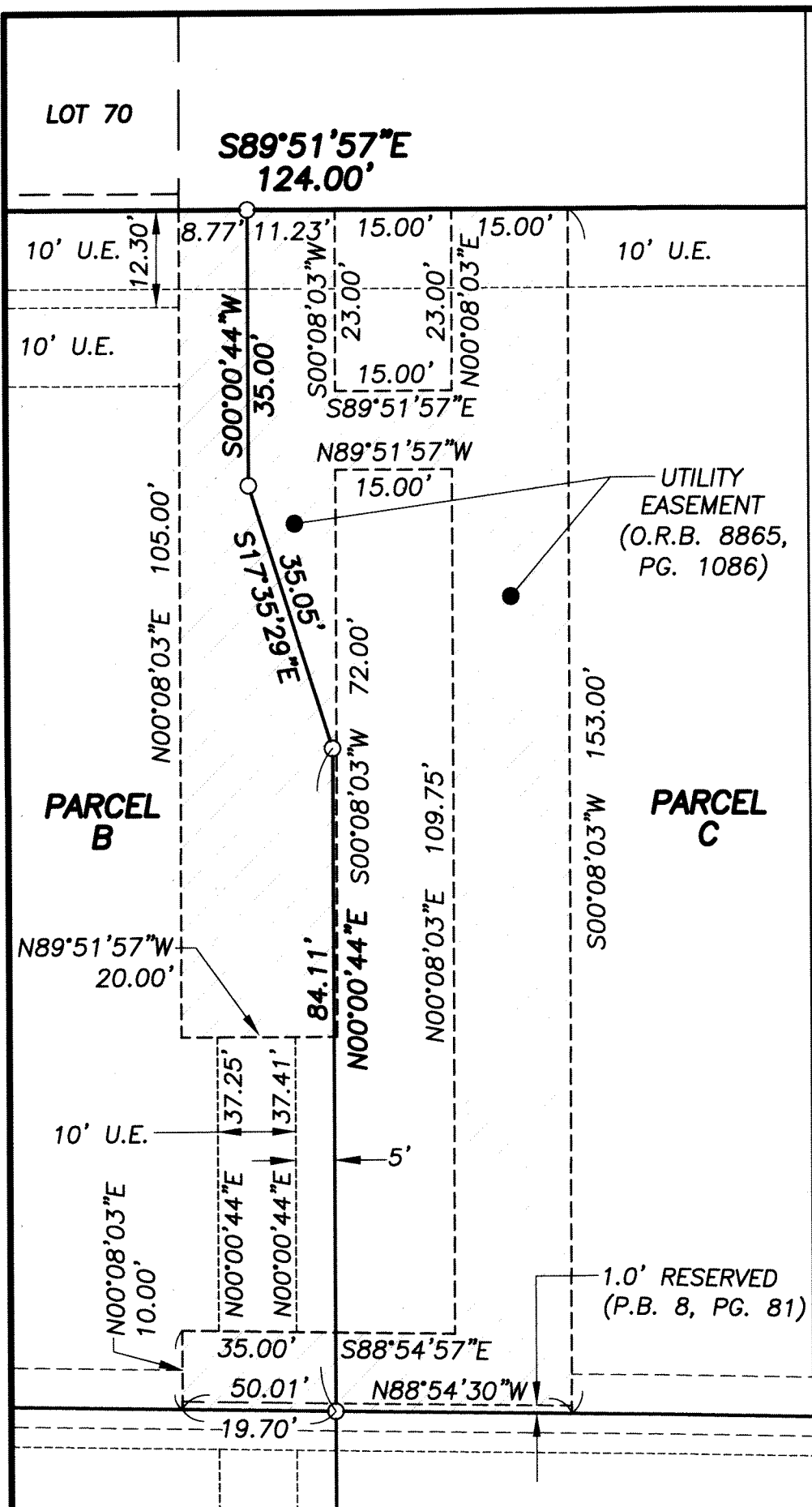
# El Bravo - Singer Annex

BEING A REPLAT OF LOTS 3 AND 5 AND A PORTION OF LOT 1 OF THE PLAT OF EL BRAVO PARK AS RECORDED IN PLAT BOOK 8, PAGE 9, AND A REPLAT OF LOTS 72, 73, 74 AND A PORTION OF LOTS 12, 13, 14, 15, 69, 70 AND 71 OF THE PLAT OF SINGER ADDITION TO PALM BEACH AS RECORDED IN PLAT BOOK 8, PAGE 81, TOGETHER WITH A PORTION OF MIDDLE ROAD, ACCORDING TO SAID PLAT OF SINGER ADDITION TO PALM BEACH, ALL AS RECORDED IN THE PUBLIC RECORDS OF PALM BEACH COUNTY, FLORIDA, AND LYING IN SECTION 26, TOWNSHIP 43 SOUTH, RANGE 43 EAST, TOWN OF PALM BEACH, PALM BEACH COUNTY, FLORIDA

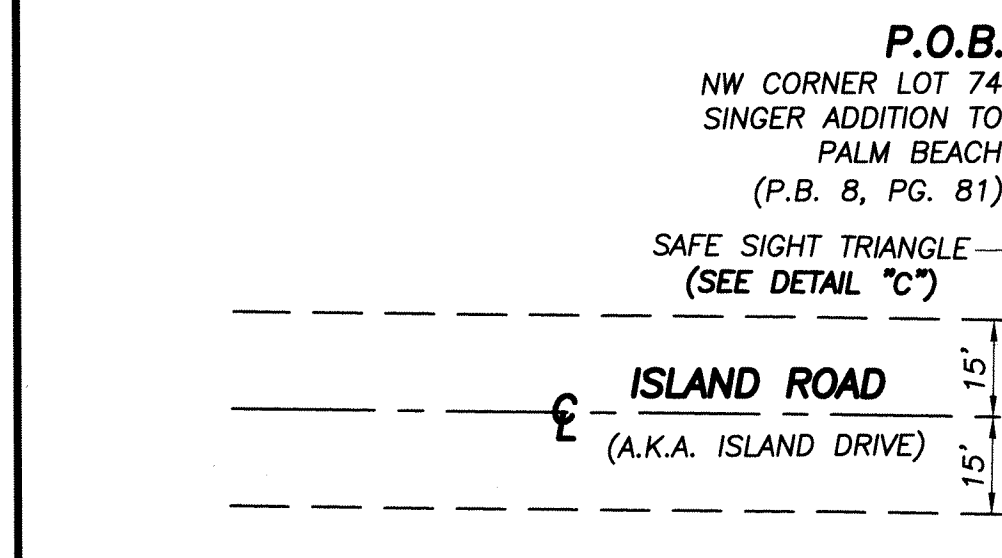


# 117

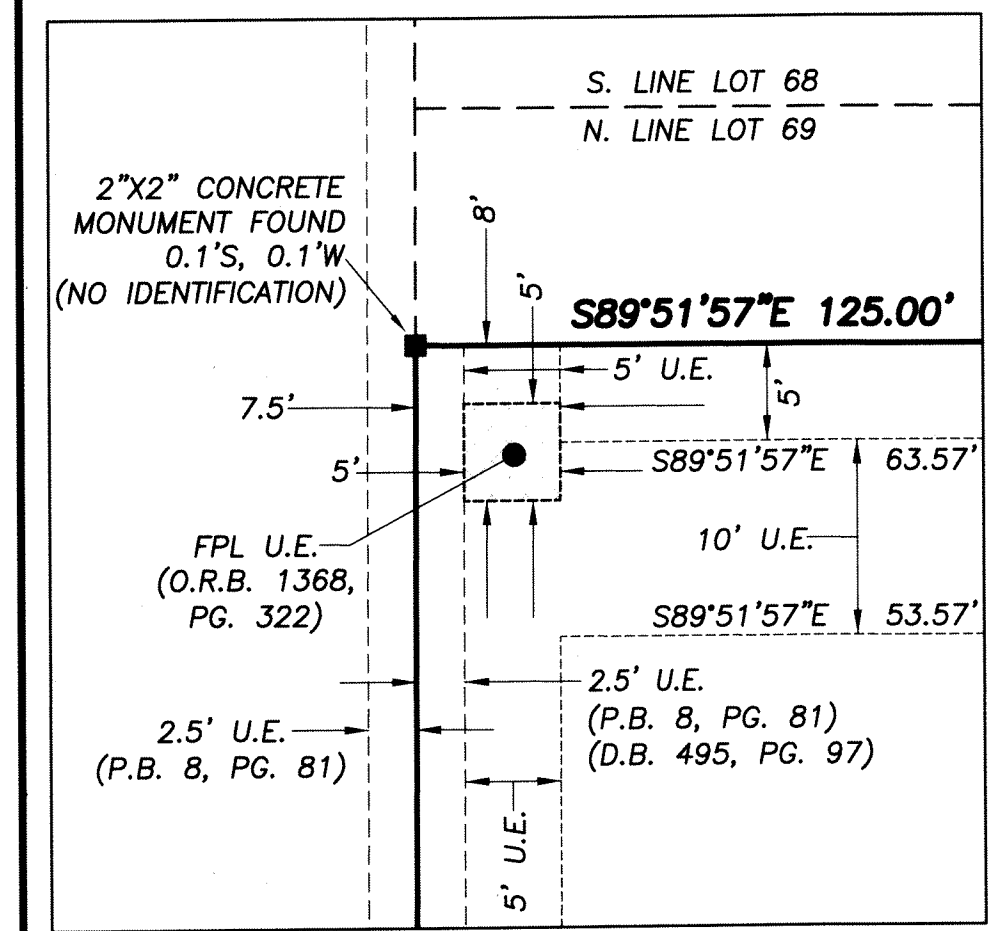
SHEET 2 OF 2



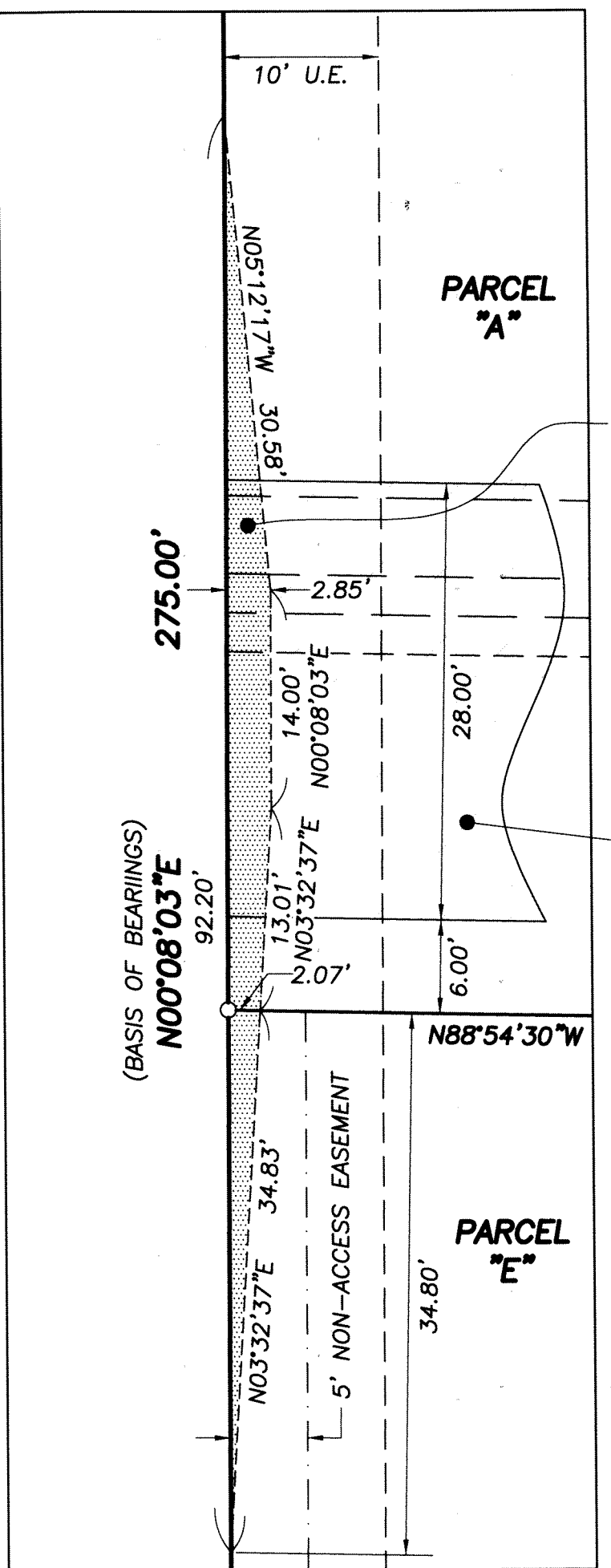
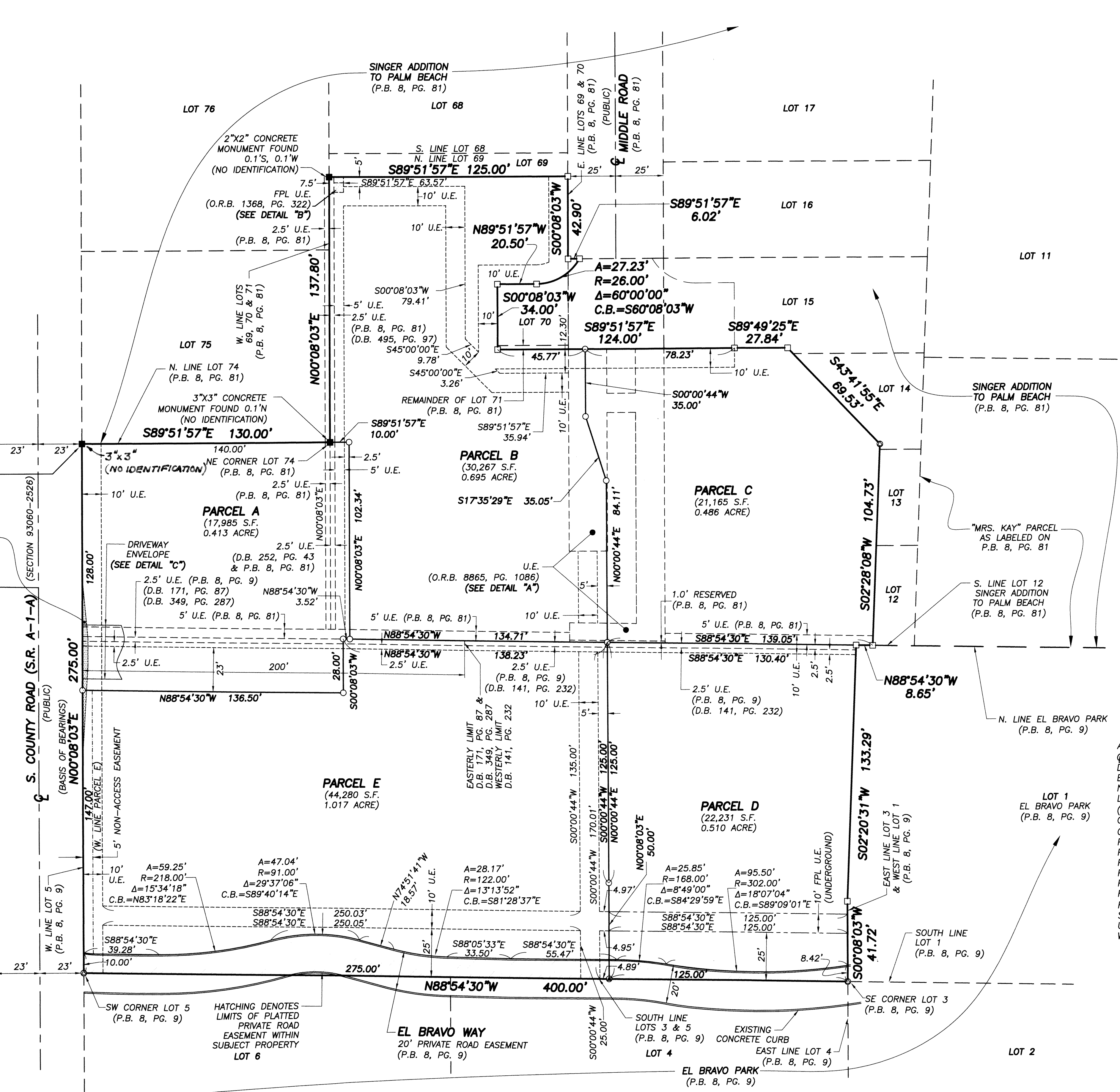
DETAIL "A"  
SCALE: 1" = 20'



DETAIL "B"  
SCALE: 1" = 10'



DETAIL "C"  
SCALE: 1" = 10'



DETAIL "C"  
SCALE: 1" = 10'

### ABBREVIATIONS & SYMBOLS

- = CONCRETE MONUMENT FOUND (AS NOTED)
  - = 4"x4" CONCRETE MONUMENT WITH DISK STAMPED "P.R.M. LB #4569"
  - = SET 5/8" IRON ROD & CAP STAMPED "WALLACE LB #4569"
  - = FOUND IRON ROD AND CAP (AS NOTED)
  - = SET MAG NAIL & DISK STAMPED "P.R.M. LB #4569"
  - = SET MAG NAIL & DISK STAMPED "WALLACE" LB #4569"
  - A.K.A. = ALSO KNOWN AS
  - C, C/L = CENTERLINE
  - D.B. = DEED BOOK
  - ESMT. = EASEMENT
  - N.A.E. = NON-ACCESS EASEMENT
  - L.B. = LICENSED BUSINESS
  - (M) = MEASURE
  - O.R.B. = OFFICIAL RECORDS BOOK
  - O/S = OFFSET
  - P.B. = PLAT BOOK
  - P.B.C. = PALM BEACH COUNTY
  - PG. = PAGE
  - P.O.B. = POINT OF BEGINNING
  - P.R.M. = PERMANENT REFERENCE MONUMENT
  - R.P.B. = ROAD PLAT BOOK
  - R/W = RIGHT-OF-WAY
  - S.R. = STATE ROAD
  - U.E. = UTILITY EASEMENT
  - W.C. = WITNESS CORNER
- 
- CURVE SYMBOLS**
- A = ARC (LENGTH)
  - R = RADIUS
  - Δ = CENTRAL ANGLE
  - C.B. = CHORD BEARING

Subdivision 1-2017

**El Bravo - Singer Annex**



FIELD:	JOB NO: 14-1338.14	F.B.	PG.
OFFICE: R.C.N.I.	DATE: APRIL 2017	DWG. NO. 14-1338-9	
C'KD: C.W.	REF: 14-1338-1.DWG	SHEET 2 OF 2	